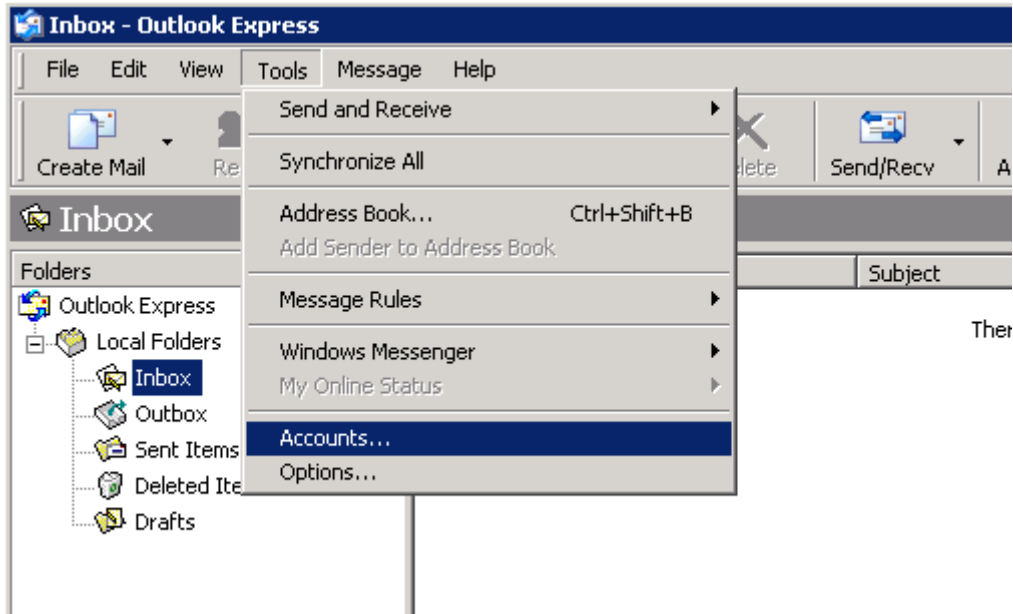


Microsoft Outlook Express 6.0 setup procedure

1.

* Load Microsoft Outlook Express 6.0

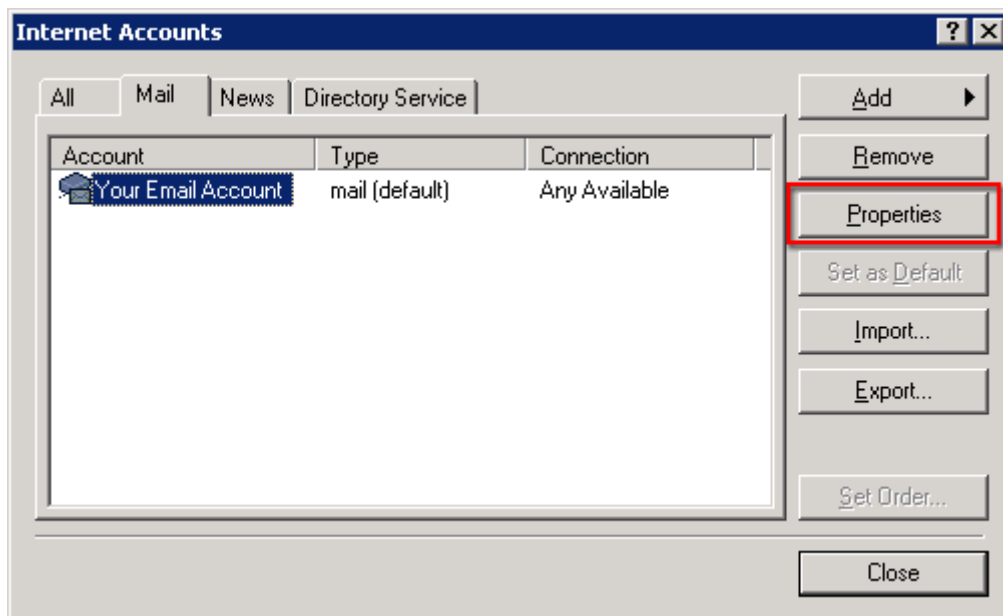
* From the main screen open the the 'Tools' menu and then select 'Accounts...'



2.

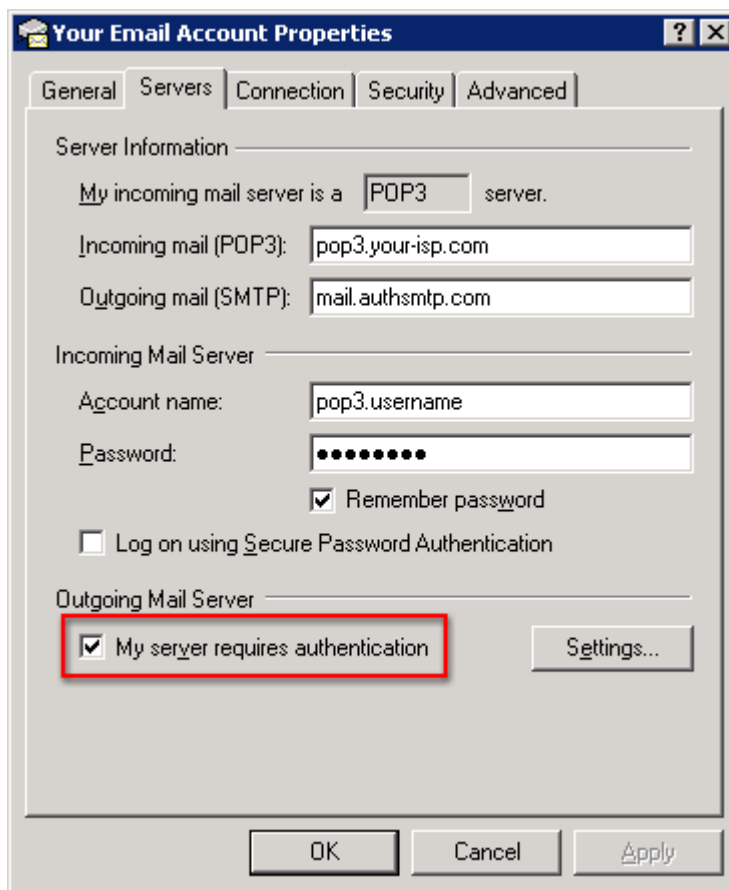
* Click on the email account to modify - this will cause it to become highlighted

* Click on the 'Properties' button



3.

- * Click on the 'Servers' tab.
- * Change the 'Outgoing mail server (SMTP)' to the SMTP server we supplied with your signup email
- * Tick the box next to 'My server requires authentication'
- * Click on the 'Settings...' button

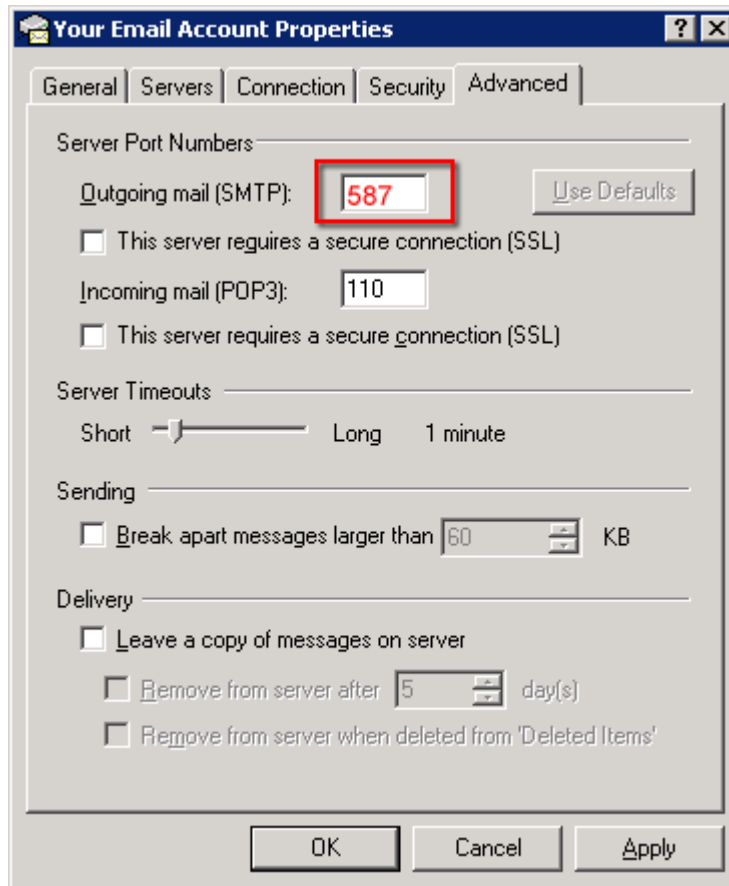


4.

- * Select 'Use same settings as my incoming mail server'
- * Click the 'OK' button



- 5.
- * Click the 'Advanced' tab
 - * Change the 'Outgoing mail (SMTP)' port number to the alternate port (port 587 is recommended)
 - * 'Ok' button



- 7.
- *Click the 'Close' button